

# Tools, Tips, and Workflows

## Customizing Classification Brush/Stamp Sizes



Lewis Graham  
August 2012  
Revision 1.0

LP360 uses "stamps" for Point Cloud Tasks (PCT) and "brushes" for manual data reclassification. The stamps of the PCT include a single circular stamp and a single square stamp. The paint brushes include small, medium and large brushes. But did you realize that these are actually "templates", the size of which you can modify?



Figure 1 - The Point Cloud Tasks Toolbar "Stamp" Tools



Figure 2 - The Classification Toolbar "Paint Brush" Tools

Instantiate a stamp (from the PCT toolbar) or a classification paint brush from the classification toolbar. Once the circle or rectangle is displayed, you can change its size. In LP360 (standalone for 32 bit or 64 bit), simply hold down the control key and press the arrow keys to change the size of the stamp/brush. In LP360 for ArcGIS®, you will need to use the numeric keypad "arrow" keys to change the shape (ArcGIS® uses the control/arrow combination to scroll the display). Figure 3 shows an example of making a giant circular paint brush from the small paint brush tool.

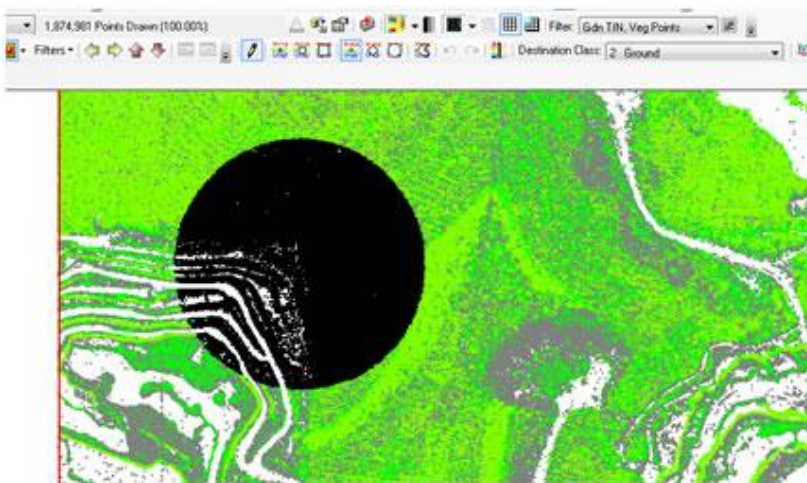


Figure 3 - Enlarging a Circular Paint Brush

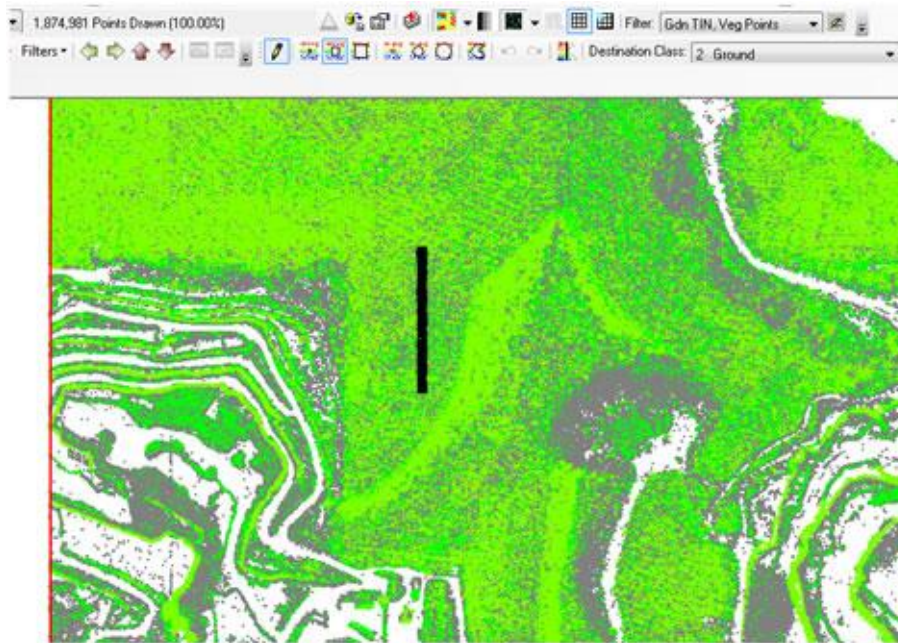
- LP360 Basic Edition
- LP360 Standard Edition
- LP360 sUAS Edition
- LP360 Advanced Edition
- ArcGIS
- Windows
- GeoCue

## Tools, Tips, and Workflows

# Customizing Classification Brush/Stamp Sizes



Figure 4 shows a narrow but tall paint brush constructed from the medium rectangle tool.



*Figure 4 - Constructing a rectangular paint brush*

Note that these custom brush/stamp designs are retained throughout your LP360 session. Thus you can think of these tools as "templates" that you can customize for the editing session. For example, you could have your small rectangle template point to a tall, narrow brush and your large rectangle template point to a short, wide brush.

Using these size customization features allows you to quickly construct the tool that is just the right size for the job.