

# Tools, Tips, and Workflows

## Classification Point Filter Shortcuts



Nancy Graham  
October 2013  
Revision 1.0

The **Classification Point Filter** is used often throughout LP360 as part of the set-up routine for many different tasks. For example, many of the Point Cloud Tasks (PCT) require you to use this filter to select the classification source points that are either included or excluded when setting up and executing a PCT task. (Figure 1)

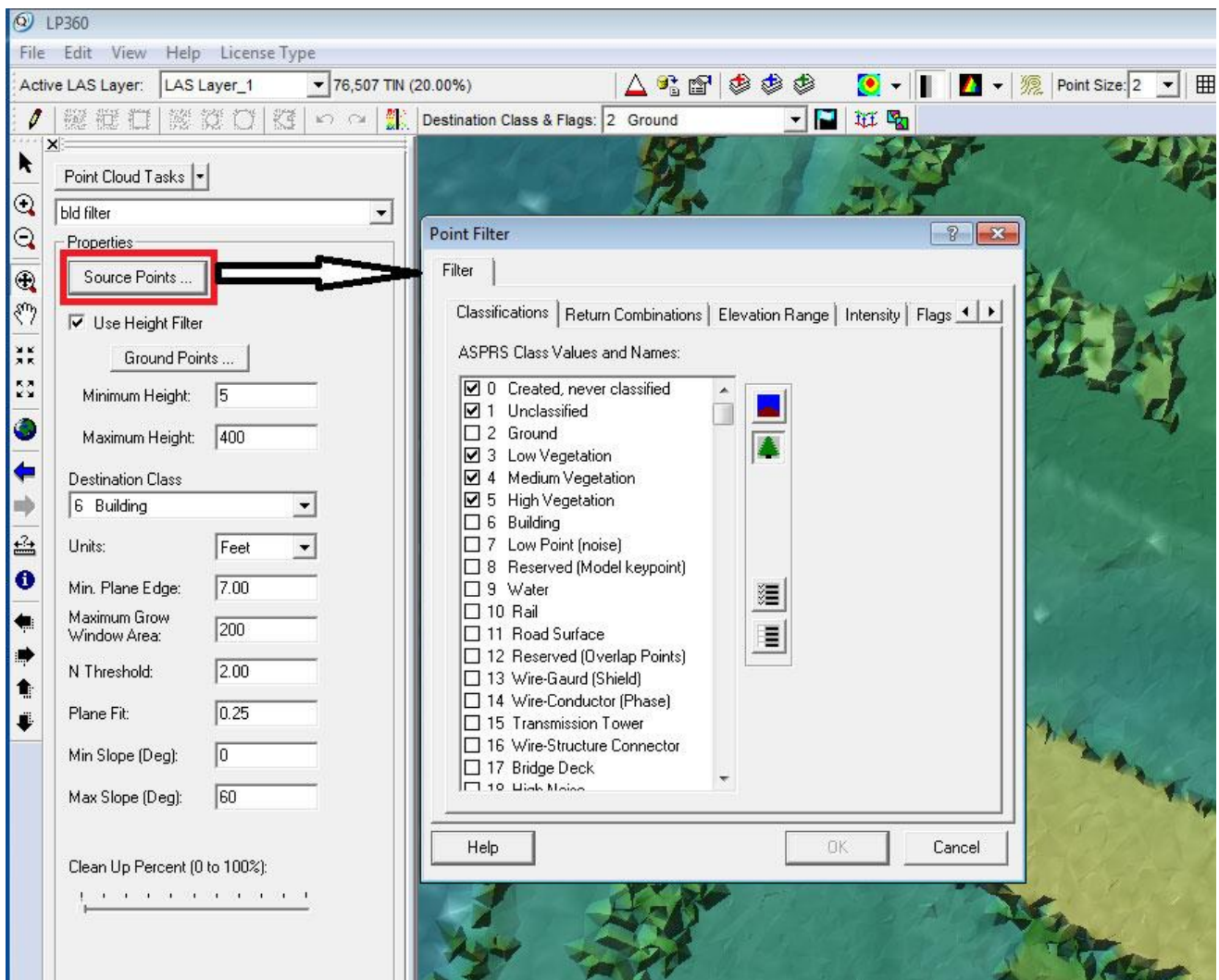


Figure 1

## Tools, Tips, and Workflows

# Classification Point Filter Shortcuts



There are four buttons associated with this dialog to make the selection or exclusion of points easier:



Toggles Bare Earth Classified points (Classes 2 & 8) on or off.



Toggles Vegetation points (Classes 3, 4, & 5) on or off.



Any Class currently unselected will be toggled on.



Any Class currently selected will be Toggled Off.