


Tools, Tips, and Workflows

Adding LIDAR Data to LP360

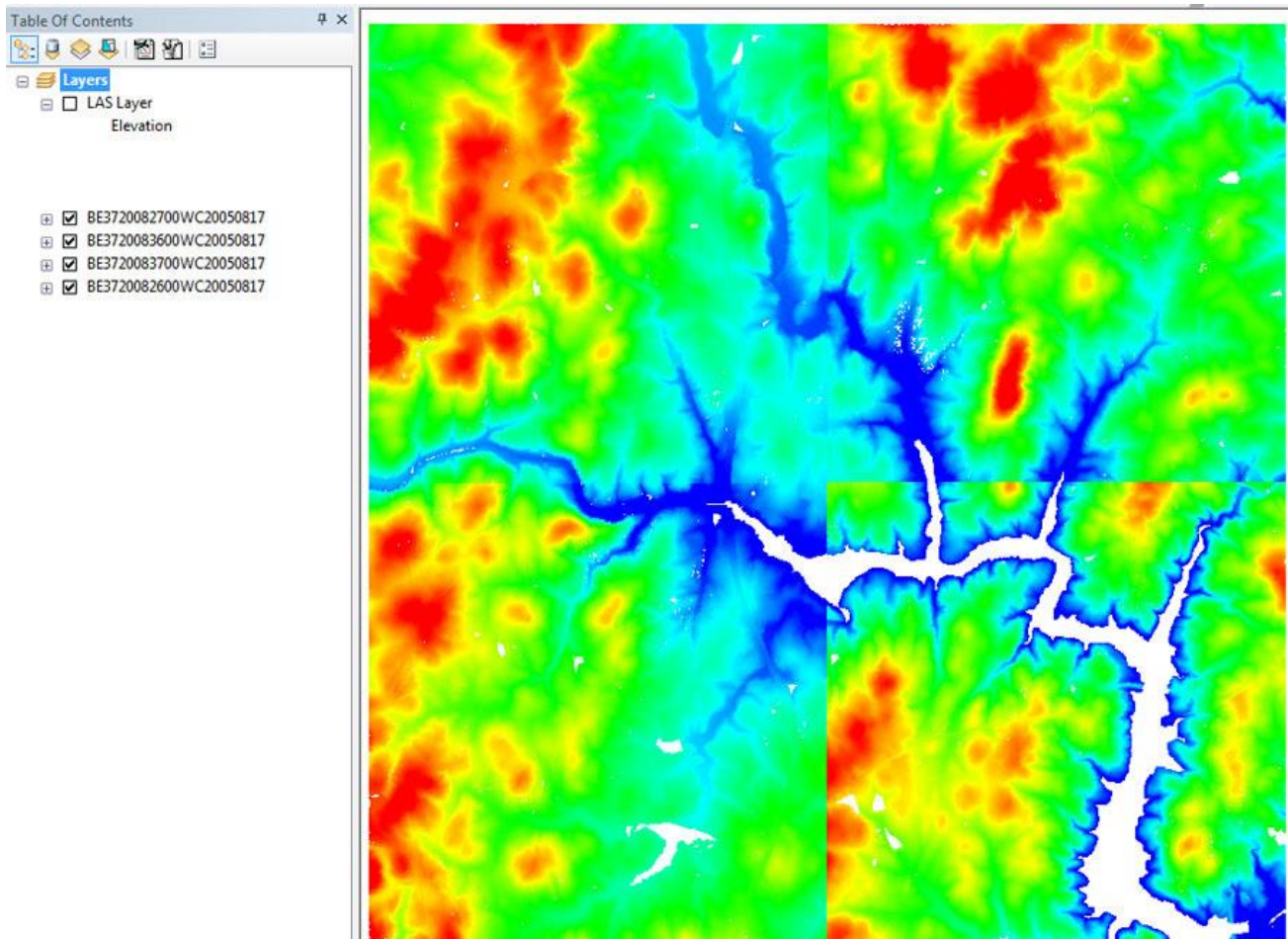
B S A U | A W G



Karrie-Sue Simmers, Darrick Wagg
December 2012
Revision 1.0

For those familiar with ArcGIS, yet new to using LP360, how to add LIDAR data to LP360 for ArcGIS is often confusing. Typical first instinct is to use ESRI's Add Data Button  to load your LIDAR data into the program.

The problem is that using this button will add each LIDAR file to a separate layer in the Table of Contents, which makes it difficult to work with many files. The viewing of the data is also difficult as each layer will have a different elevation ramp (Figure 2) and the profile and 3D viewer panes only work with one layer at a time.




Tools, Tips, and Workflows

Adding LIDAR Data to LP360



Figure 2 - LIDAR Elevation ramp across files using ArcGIS

The ideal way to add LIDAR data to LP360 is to use LP360's Add LIDAR Data button . This option will add all your LIDAR files to the same LAS Layer in the Table of Contents. In doing so, a continuous elevation color ramp across all files is used for the display (Figure 4). Additionally, all manipulations, exports and display properties are performed based upon the selected LIDAR Layer within LP360. Hence, having all LIDAR files under one LAS Layer makes these tasks easier.

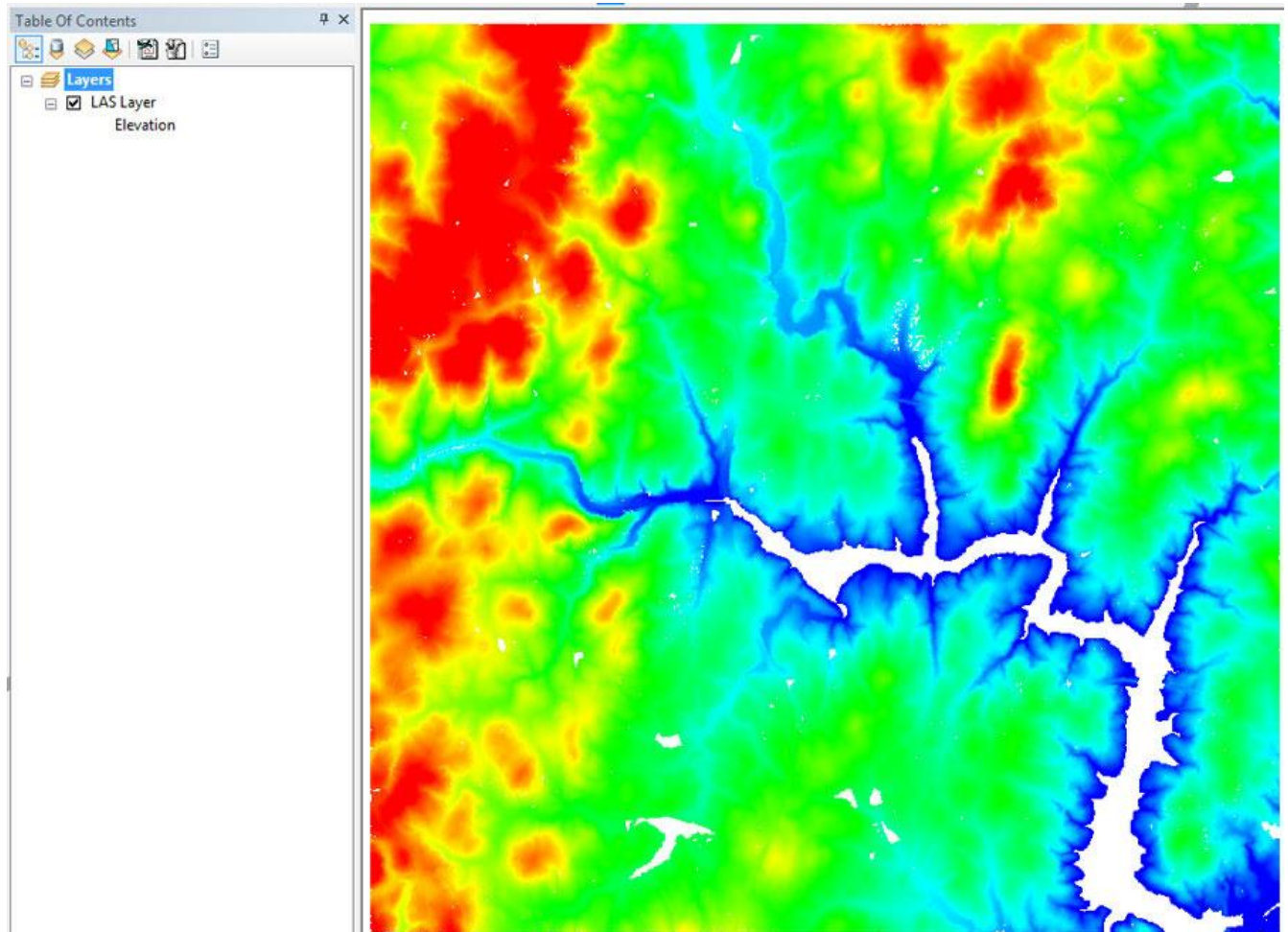


Figure 4 - LIDAR Elevation ramp across files using LP360